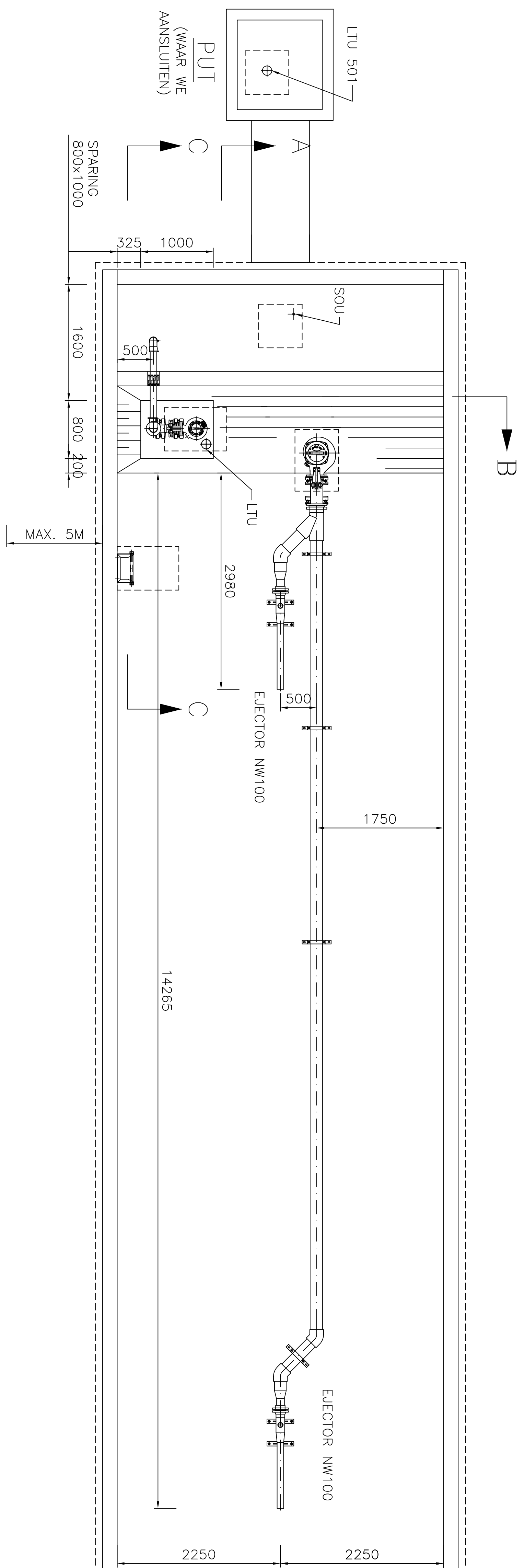
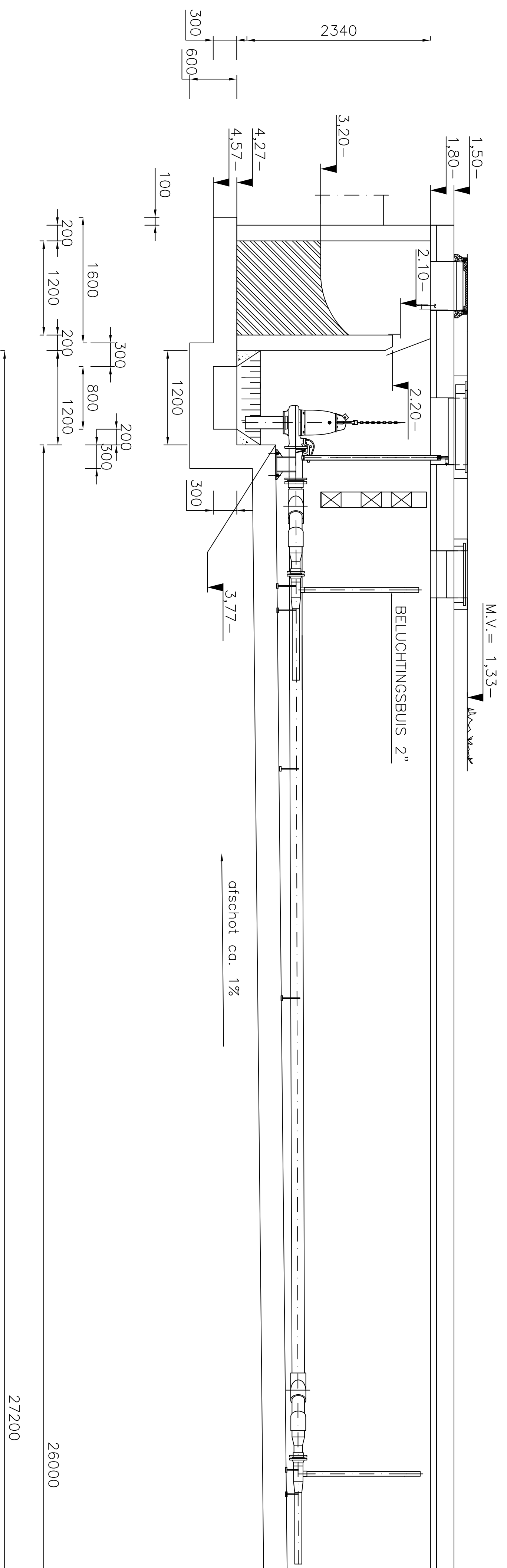


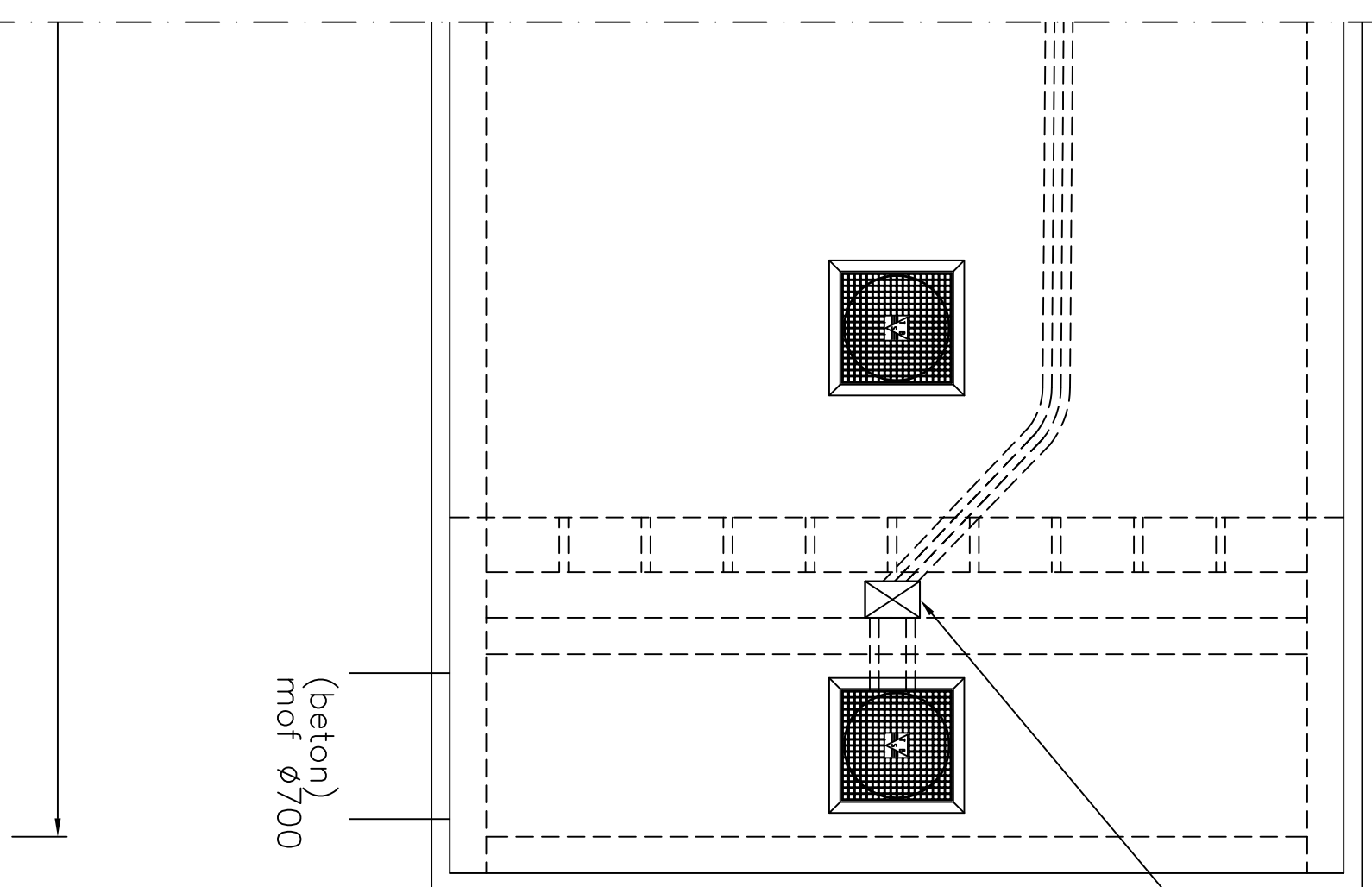
BOVENAANZICHT



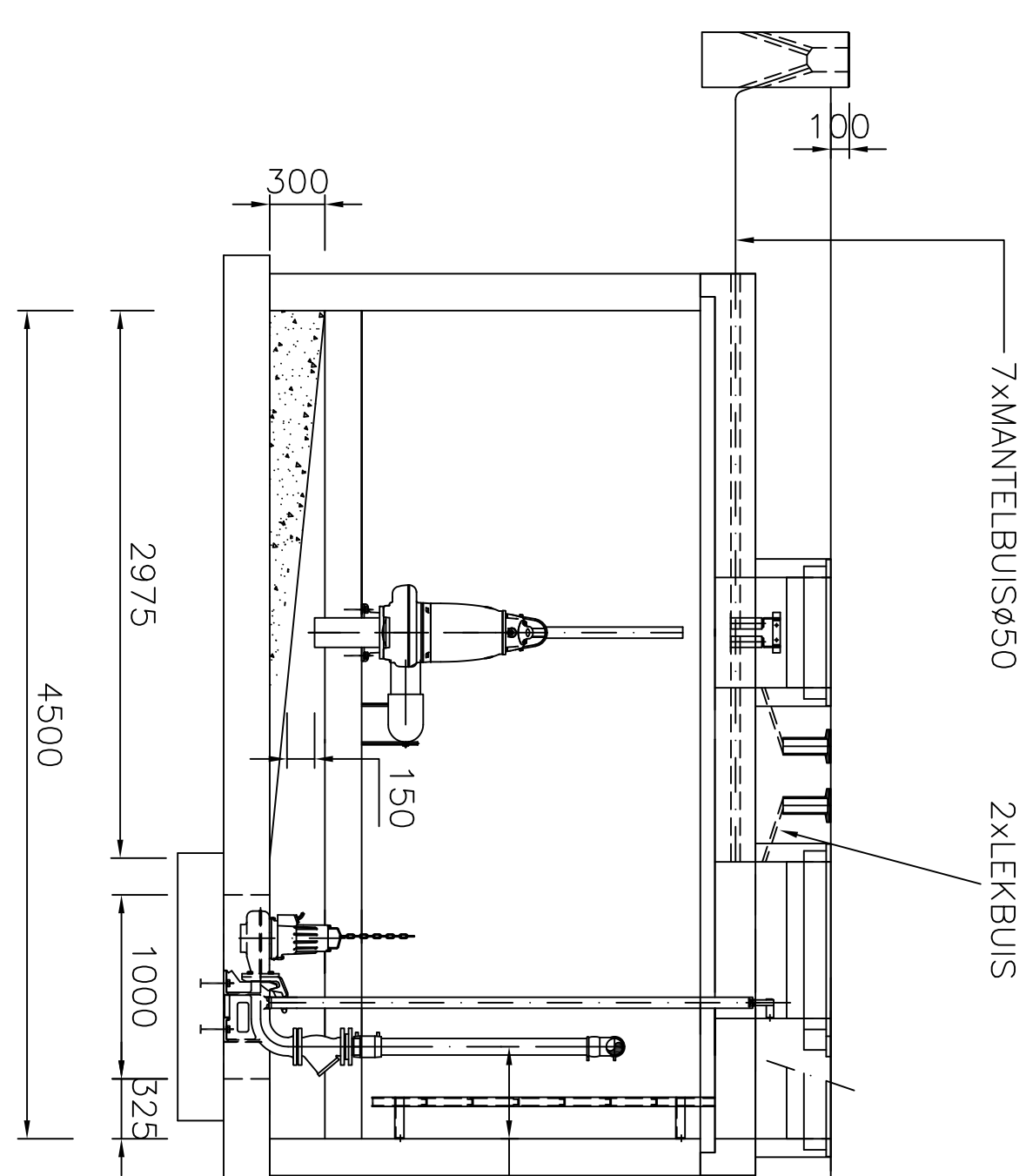
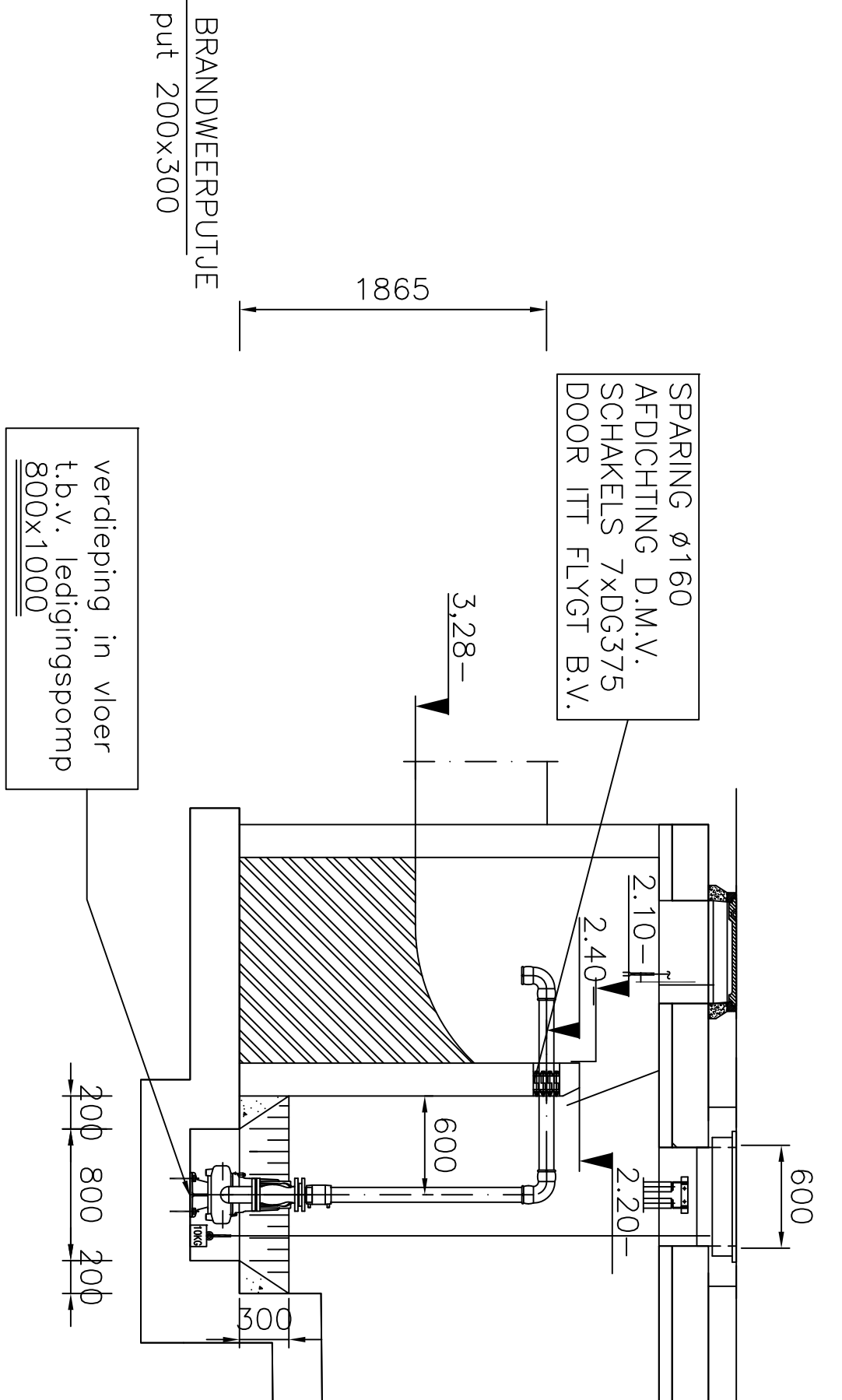
BOVENAANZICHT ZONDER BOVENPLAAT



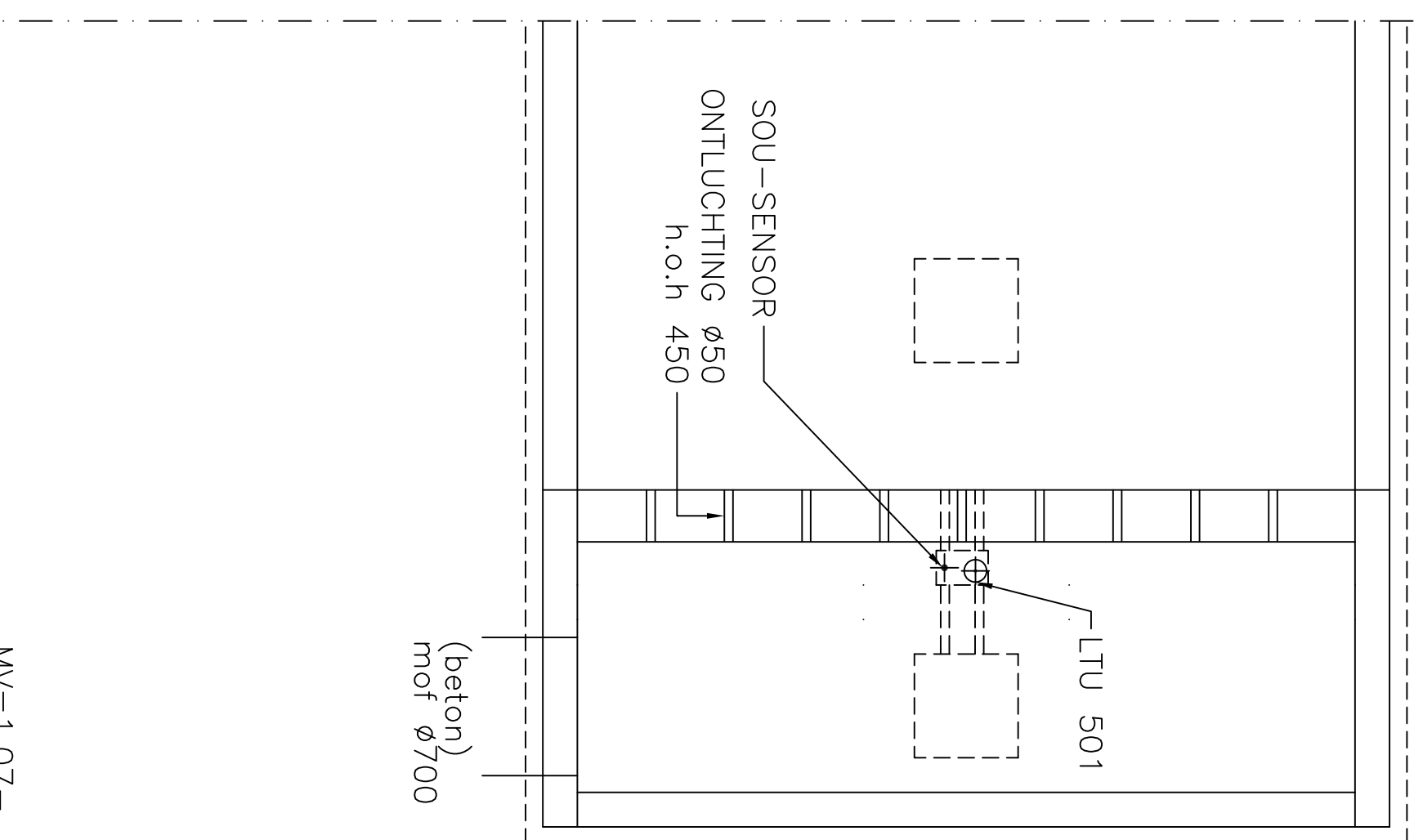
DOORSNEDE A-A



DOORSNEDE C-C



DOORSNEDE B-B



DETAIL: BETONVOET DDFE

C	03-02-2006	GI	WIZJINGEN CONFORM OPMERKINGEN KLANT
B	25-01-2006	GI	WIZJINGEN CONFORM OPMERKINGEN KLANT
D	06-03-2006	GI	WIZJINGEN CONFORM OPMERKINGEN KLANT
Wijz.	Datum	gel.	Omschrijving
Opdrachtgever: GEBR. SCHOLIS BV			
Postbus 1250			
2302 BG LEDEN			

BODEGRAVEN

SP-ELPOMP NP3153.181MT W.433

9xW50/PCV4160 2x-EJECTOR NW100

WIZJINGEN CONFORM OPMERKINGEN KLANT

4000/12xW

NW60/HDFE90

**ITT Flygt B.V.**

Postbus 1126

3300 BG Dordrecht

Tel. (078) 654 84 00

Fax. (078) 654 03 35

E-mail: [flygt@flygt.com](mailto:flygt@flygt.com)

**FLYGT**

Referentie: **05M0929/02**

Wijz.: **D**

ITT Industries

Tel. (078) 654 84 00

Fax. (078) 654 03 35

E-mail: [flygt@flygt.com](mailto:flygt@flygt.com)

Projectnummer: **H.TEELINK**

Wijz.: **D**